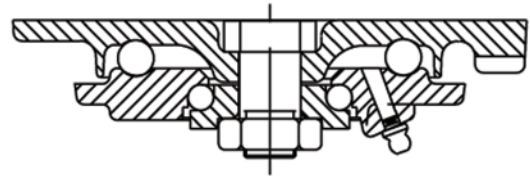
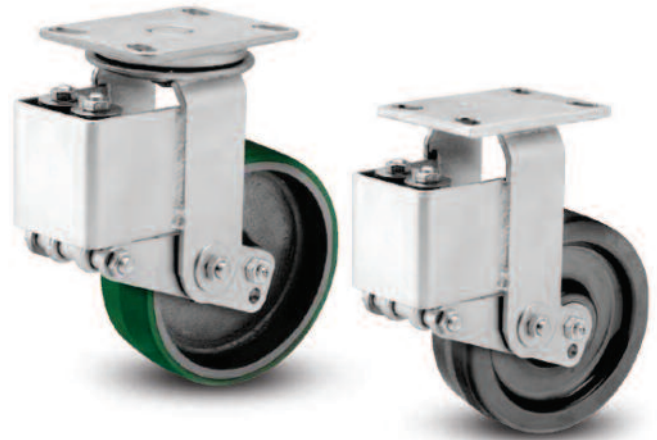


CONSTRUCTION FEATURES

Load Capacity Up to 800 lbs.

- Designed with greater load capacity than our 40 series, this series protects from damaging shocks or unwanted vibration and movement. Noise levels are reduced through the dampening effect of these casters.
- Load Springs: Maximum rated capacity loads will deflect wheel approximately 5/8" (50%). Different load springs for each series permits wide variation in ride "softness." They can be preloaded to obtain various degrees of deflection
- Top Plate & Yoke Base: AISI 1045 drop forged steel for extended service life
- Swivel Section: Double ball bearing with coined "deep-groove" load and machined thrust raceways provide optimal performance under extreme loads
- Legs: 1/4" steel, formed to increase strength
- King Bolt: 3/4" diameter heat treated bolt and nut for enhanced shock load capacity
- Axle: 1/2" diameter hollow axle with lock nut for easy lubrication of wheels with straight roller bearing. Solid axle for 28 ball bearing
- Lubrication: Zerk fitting in swivel section and in recessed head of hollow axle
- **Alternate or custom caster configurations available**



RIG OPTIONS

NS	Neoprene Sealed Swivel Section
ZF	Hollow Axle
SSB	Single Side Brake
DSB	Double Side Brake
SL	Swivel Lock

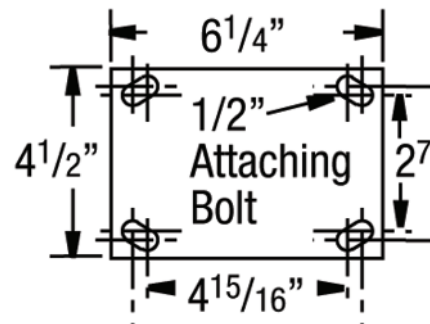
Top Plate

Top Plate: 4-1/2" x 6-1/4"

Bolt Hole Centers: 2-5/8" x 3-5/8"

slotted to 3" x 3"

Attaching Bolt: 3/8"



Typical Applications

- Aircraft tripod jacks
- Portable medical equipment
- Computer equipment
- Shock sensitive loads

CASTER SPECIFICATIONS

Wheel Type (Wheel Code)	Diameter (in.)	Width (in.)	Capacity (lbs.)	OAH (in.)	Swivel Lead (in.)	Approx. Wt. (lbs.)	Bearing Part Number Add B, P, PL, R or T*
Polyurethane / Cast Iron Core (PY/CA) with Precision Ball Bearing							
	8	2-1/2	800	11-1/2	2-1/4	19-1/2	5-72SA-PY/CA-P-0825-S
	10	2-1/2	800	13-1/2	2-1/4	23	5-72SA-PY/CA-P-1025-S
Vulkollan™ / Cast Iron Core (VU/CA) with Precision Ball Bearing							
	8	2-1/2	800	11-1/2	2-1/4	21	5-72SA-VU/CA-P-0825-S
	10	2-1/2	800	13-1/2	2-1/4	23	5-72SA-VU/CA-P-1025-S
Polyurethane / Aluminum Core (PY/AL) with Precision Ball Bearing							
	8	2-1/2	800	11-1/2	2-1/4	17	5-72SA-PY/AL-P-0825-S
	10	2-1/2	800	13-1/2	2-1/4	20	5-72SA-PY/AL-P-1025-S
Moldon Rubber / Cast Iron Core (MR/CA) with Precision Ball Bearing							
	8	2-1/2	800	11-1/2	2-1/4	22	5-72SA-MR/CA-P-0825-S
	10	2-1/2	800	13-1/2	2-1/4	26	5-72SA-MR/CA-P-1025-S

*Add "B" for Ball Bearing, "P" for Precision Bearing, "PL" for Plain Bearing, "R" for Roller Bearing or "T" for Tapered Bearing.

All load ratings are for manual operation at 2 mph.

For rigid casters, change "S" to "R" (i.e. 5-72/SA-PB-R-0415-S becomes 5-72/SA-PB-R-0415-R)

See Wheel Section 12 for other premium wheels to fit 2-1/2" hub length / 1/2" axle / nut.